

Nonna

GIUCY GIUCE

a
100
years



Francesca's Garden Quilt designed by: **Giucy Giuce** • Quilt Size: **76" x 76"**

Skill Level: **Advanced Beginner** • andoverfabrics.com

andover

•
•
• makower.uk
•

Free Pattern Download Available

1384 Broadway New York, NY 10018
Tel. (800) 223-5678 • andoverfabrics.com

Francesca's Garden Quilt

Introducing Andover Fabrics new collection: **NONNA** by Giucy Giuce

Quilt designed by Giucy Giuce



Quilt finishes 76" x 76"

24 Nine Patch Blocks: 9" x 9"

Multiple borders, plain and pieced, uniquely frame the elegant floral bouquet in the center of this wall quilt or queen topper. Quick piecing methods make easy work of this spin on a traditional design.

Cutting Directions

Note: Read assembly directions before cutting patches. All measurements are cut sizes and include 1/4" seam allowances. A fat 1/8 is a 9" x 20"-22" cut of fabric. A fat 1/4 is an 18" x 20"-22" cut. WOF designates the width of fabric from selvedge to selvedge (approximately 42" wide).

Fabric Requirements

		Yardage	Fabric
Fabric A	center	fat 1/4 yard	**9872 B
Fabric B	center	fat 1/4 yard	9872 Y
Fabric C	border 7	fat 1/4 yard	9873 C
Fabric D	border 3	fat 1/8 yard	9873 O
Fabric E	borders 1, 2	7/8 yard	9873 Y
Fabric F	blocks	1 yard	9874 G
Fabric G	borders 3, 7	1/4 yard	9878 R
Fabric H	border 3	5/8 yard	9879 E
Fabric I	borders 1, 4-6	2 yards	*9879 G
Fabric J	border 7	7/8 yard	9880 L
Fabric K	blocks	3/4 yard	9881 LT
Fabric L	border 1	fat 1/8 yard	9874 Y
Fabric M	border 3	fat 1/8 yard	9248 O3
3 Blue	blocks	fat 1/4 yard ea.	
		9875 B 9877 B 9878 T	
2 Green	blocks	fat 1/4 yard ea.	
		9875 G 9877 G	
5 Fat 1/8	border 3	fat 1/8 yard ea.	
		9874 O 9875 E 9876 O 9876 Y	
		9248 E4	
7 Fat 1/8	border 7	fat 1/8 yard ea.	
		9874 C 9874 E 9876 P 9877 C	
		9878 P 9879 C 9880 C	
Binding		7/8 yard	*9879 G
Backing		5 yards	**9872 B

Fabric A	Cut (2) squares 10" (trimmed later), cut in half diagonally to make 4 half-square triangles
Fabric B	Cut (1) square 13 1/4" Cut (4) squares 4" (3f") for HST in Border 1
Fabric C	Fussy-cut (8) squares 4 1/2" for Border 7
Fabric D	Fussy-cut (4) squares 4 1/2" for Border 3
Fabric E	Fussy-cut (2) top/bottom borders 4 1/2" x 32 1/2" cut crosswise Fussy-cut (2) side borders 4 1/2" x 24 1/2" Cut (4) squares 4" (3 7/8") for HST in Border 1
Fabric F	Cut (15) strips 3 1/2" x 16" for Nine-Patch Blocks
Fabric G	Cut (6) squares 5" (4 7/8") for HST (2 squares for Border 3, 4 squares for Border 7)
Fabric H	Cut (16) squares 5" (4 7/8") for HST in Border 3
Fabric I	Cut (2) t/b borders 3" x 68 1/2", cut lengthwise Cut (2) side borders 3" x 63 1/2" Cut (2) t/b borders 3" x 45 1/2" Cut (2) side borders 3" x 40 1/2" Cut (12) squares 4" (3 7/8") for HST in Border 1 Cut (4) squares 3 1/2" for Border 1 Cut (4) strips 3 1/2" x 16" for Nine-Patch Blocks
Fabric J	Cut (32) squares 5" (4 7/8") for HST in Border 7
Fabric K	Cut (12) strips 3 1/2" x 16" for Nine-Patch Blocks
Fabric L	Cut (4) squares 4" (3 7/8") for HST in Border 1
Fabric M	Cut (4) squares 5" (4 7/8") for HST in Border 3
3 Blue	From each: Cut (5) strips 3 1/2" x 16" for Nine-Patch Blocks
2 Green	From each: Cut (4) strips 3 1/2" x 16" for Nine-Patch Blocks
5 Fat 1/8	From each: Cut (2) squares 5" (4 7/8") for HST in border 3
7 Fat 1/8	From each: Cut (4) squares 5" (4 7/8") for HST in border 7
Binding	Cut (8) strips 2 1/2" x WOF
Backing	Cut (2) panels 42" x 84", pieced to fit quilt top with overlap on all sides

Making the Quilt

1. Referring to the Quilt Diagram, sew Fabric A triangles to sides of the Fabric B square. Trim the pieced square to 24½" if needed, leaving an even seam allowance all around.

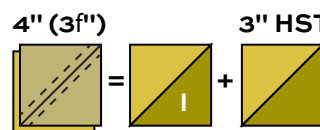


Diagram 1 – Make 24 for Border 1

2. Border 1: This border is made with half-square triangles (HST) that finish 3" square. Use your favorite method to make HST, or follow these directions. Cut squares 4" for HST that will be trimmed after stitching. If you prefer not to trim, cut squares 3⅞". Draw a diagonal line on the wrong side of each Fabric I 4" (3⅞") square. Place a marked square on a Fabric B, E, or L square, right sides together. Sew ¼" seam on each side of the marked line; cut apart on the marked line (Diagram 1). Press open to make pieced HST. Trim the HST to 3½" square if needed. Make 24 total HST.

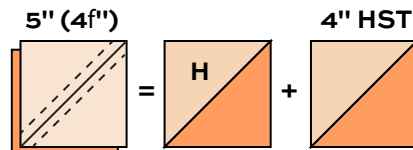


Diagram 2 – Make 32 for Border 3

Join 6 HST to make 4 borders, rotating the triangles as shown. Sew borders to the sides. Add a Fabric I square to the ends of remaining borders and sew to the top and bottom.

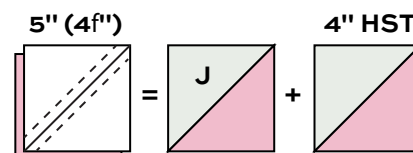
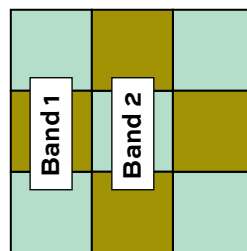


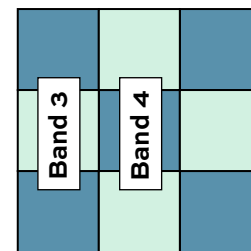
Diagram 3 – Make 64 for Border 7

3. Border 2: Sew short Fabric E borders to the sides of the quilt. Sew longer borders to the top and bottom.

4. Border 3: Refer to Diagram 2 and follow the directions in Step 2 to make 32 HST using Fabric H 5" (4⅞") squares, joined with the 5 Fat ¼ Fabrics and Fabrics G and M squares. Trim the HST to 4½" square if needed. Position 8 HST on each side of the quilt, arranging them as shown. Note the orientation of the Fabric H triangles. Looking through a camera or the wrong end of binoculars may help you find mistakes. Once you are satisfied with the arrangement, join the HST to make 4 borders. Sew to the sides of the quilt. Join a Fabric D square to ends of remaining borders, and sew to the top and bottom



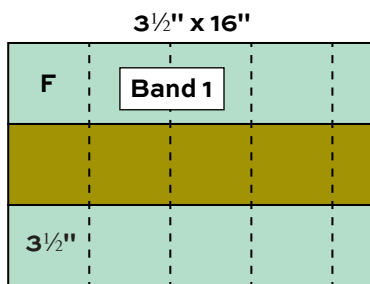
Green Nine Patch
Make 4 of each color
green for Border 5



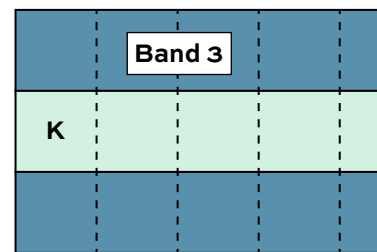
Blue Nine Patch
Make 4 of each color
blue for Border 5

5. Border 4: Sew Fabric I 40½" borders to the sides, and sew 45½" borders to the top and bottom.

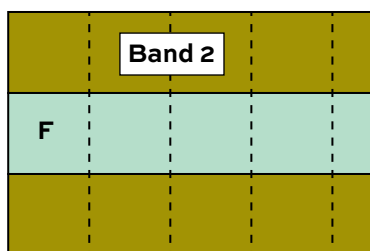
6. Border 5: Six different Nine-Patch blocks are made with strip-piecing methods. Referring to the Nine-Patch Bands diagrams, join 3½" x 16" Fabric F strips with each of the 2 Green print and Fabric I strips in the order shown. Make 2 Band 1 and 1 Band 2 with each green fabric and Fabric F strips. Each band should measure 9½" from edge to edge. Press seam allowances toward the F strips. Cut each band into 4 segments, each 3½" wide. Join Band 1 and Band 2 segments to make 4 Nine-Patch blocks of each green combination.



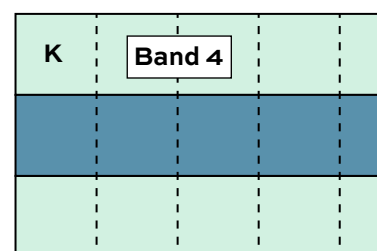
Make 2 of each color green



Make 2 of each color blue



Make 1 of each color green



Make 1 of each color blue

Likewise, make Bands 3 and 4 with the Fabric K strips and strips from the 3 Blue prints. Cut the bands into 4 segments each. Join the segments to make 4 Nine-Patch blocks of each blue combination.

Francesca's Garden Quilt

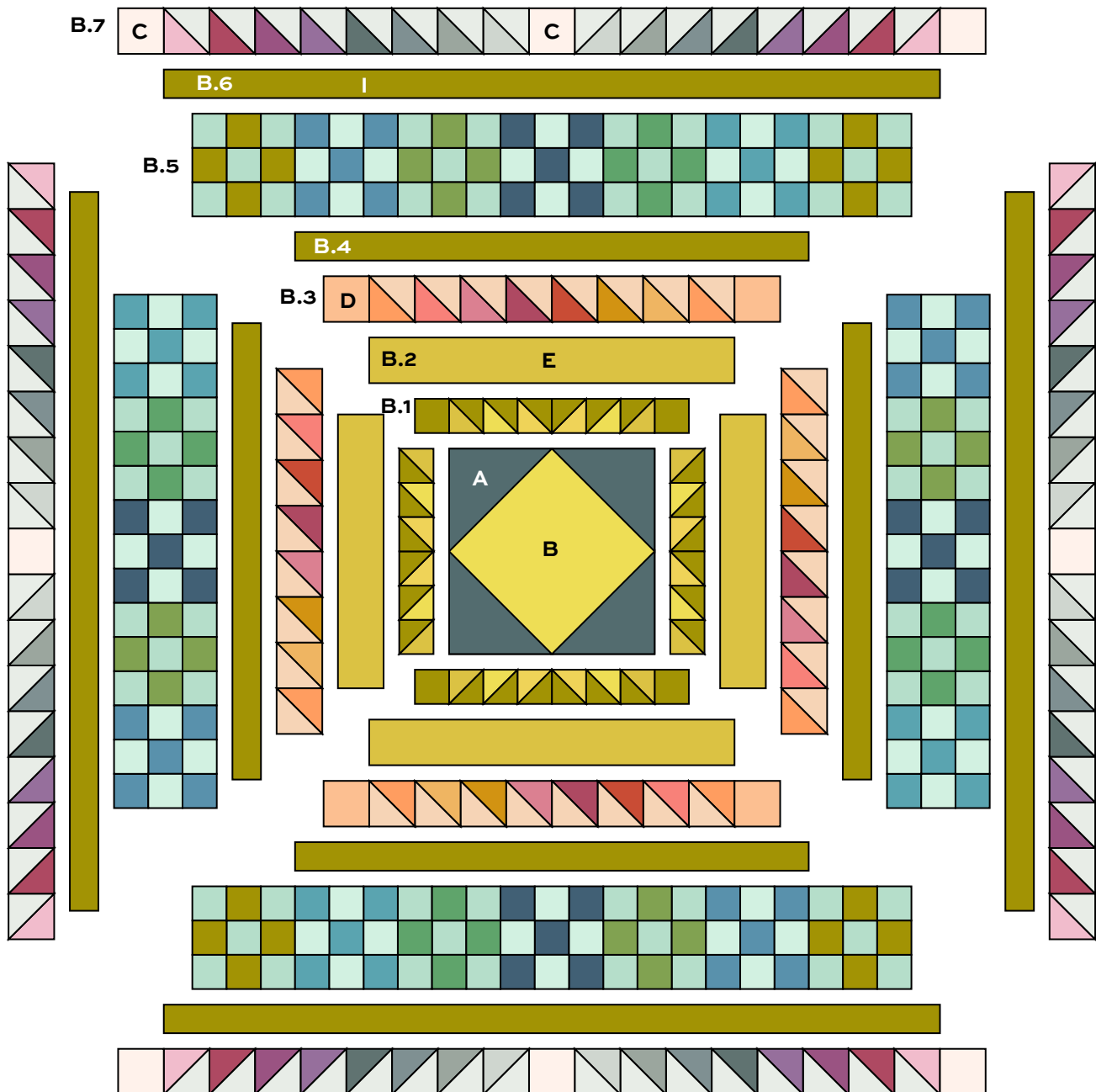


100
years

7. Border 6: Sew Fabric I $63\frac{1}{2}$ " borders to the sides, and sew $68\frac{1}{2}$ " borders to the top and bottom.
8. Border 7: Refer to Diagram 3 and follow the directions in Step 2 to make 64 HST using Fabric J $5"$ ($4\frac{7}{8}"$) squares joined with the 7 Fat $\frac{1}{8}$ Fabrics and Fabric G squares. Trim the HST to $4\frac{1}{2}"$ square if needed. Position 16 HST and a Fabric C square in the middle for each of 4 borders, arranging them as shown. Note the orientation of the Fabric J triangles. Looking through a camera or the wrong end of binoculars may help you find mistakes. Once you are satisfied with the arrangement, join 16 HST and 1 Fabric C square to make each of 4 borders. Sew to the sides of the quilt. Sew a Fabric C square to ends of remaining borders, and sew to the top and bottom.

Finishing the Quilt

9. Layer the quilt with batting and backing and baste. Quilt in the ditch around borders and block patches. Quilt around the printed motifs in the center block and in Border 2. Bind to finish the quilt.



Quilt Diagram

Nonna

GIUCY GIUCE

a
100
years



9872 B*



9873 B



9873 C*



9872 Y*



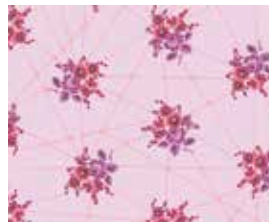
9873 *



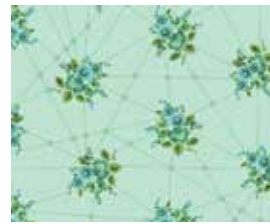
9873 Y*



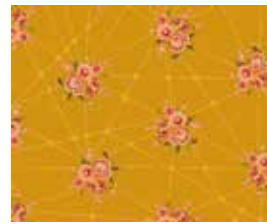
9874 C*



9874 E*



9874 G*



9874 O*



9874 Y*



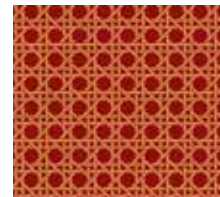
9875 B*



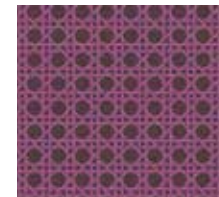
9875 E*



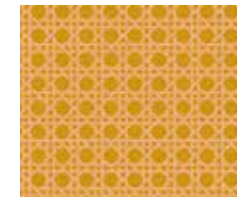
9875 G*



9876 O*



9876 P*



9876 Y*



9877 B*



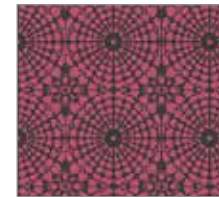
9877 C*



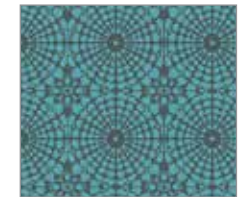
9877 G*



9878 P*



9878 R*



9878 T*



9879 C*



9879 E*



9879 G*



9880 C*



9880 L*

Additional fabrics from
Pietra and Spectrastic II by Giucy Giuce



9881 LT*



9248 E4*



9248 O3*

*Indicates fabrics used in quilt pattern.
Fabrics shown are 25% of actual size.

andover : makower.uk

Free Pattern Download Available

1384 Broadway New York, NY 10018
Tel. (800) 223-5678 • andoverfabrics.com