

Prism

GIUCY GIUCE

a
100
years



Prism Quilt designed by: **Giucy Giuce** • Quilt Size: **55" x 73½"**

Skill Level: **Beginner/Intermediate** • andoverfabrics.com

andover

•
•
• makower.uk
•

Free Pattern Download Available

1384 Broadway New York, NY 10018
Tel. (800) 223-5678 • andoverfabrics.com

Prism Quilt

Introducing Andover Fabrics new collection: **PRISM** by Giucy Giuce

Quilt designed by Giucy Giuce



Quilt finishes 55" x 73"

17 Blocks: 12" x 12"

In my first collections I focused on designs inspired by mathematics and science fiction. With Prism, I wanted to create a collection about the thing I love the most when choosing fabrics: color. Prism is my love letter to color, to the joy and inspiration it brings to my life every single day.

Cutting Directions

Note: Read assembly directions before cutting patches. All measurements are cut sizes and include ¼" seam allowances. Sash measurements include extra length for insurance. Side triangle patches are cut extra large for insurance. A fat ¼ is a 9" x 20"-22" cut of fabric. A fat ¼ is an 18" x 20"-22" cut. WOF designates the width of fabric from selvedge to selvedge (approximately 42" wide).

Cutting for ONE block:

Fabric C: Cut (4) rectangles 2½" x 4½"
Cut (4) squares 2½"

Print #1: Cut (4) rectangles 2½" x 4½" for Flying Geese

Print #2: Cut (4) rectangles 2½" x 4½"

Print #3: Cut (1) center square 4½"

Print #4: Cut (12) squares 2½" for Flying Geese and corners

Fabric A Cut (1) block center 4½" square
Cut other block patches as desired

Fabric B Cut (7) strips 2½" x WOF for binding
Cut patches for blocks as desired (read Step 1)

Fabric C Cut (2) squares 21", cut in half diagonally to make 4 half-square triangles for corners (extra large for trimming)
Cut (2) squares 20" x 20", cut in half diagonally twice to make 8 quarter-square triangles (you will use only 6)
Cut (2) sashes 1½" x 68" (extra long for trimming)
Cut (2) sashes 1½" x 55"
Cut (2) sashes 1½" x 29"
Cut (22) sashes 1½" x 12½"
Cut (68) rectangles 2½" x 4½"
Cut (68) squares 2½"

29 Prints From each:
Cut patches for blocks as desired, referring to Quilt Diagram for color placement

Backing Cut (2) panels 41" x 63", pieced to fit quilt top with overlap on all sides

Fabric Requirements

| | | Yardage | Fabric | |
|------------------|-----------------|-----------------|---------|--------|
| *Fabric A | blocks | fat ¼ yard | 9571-C | |
| Fabric B | blocks, binding | ¾ yard | 9575-C | |
| Fabric C | background | 4 yards | 9248-CL | |
| 29 Prints | blocks | fat ¼ yard each | | |
| 9571-L | 9572-G | 9572-O | 9572-P | 9573-C |
| 9573-E | 9573-N | 9573-P | 9573-T | 9574-B |
| 9574-C | 9574-G | 9574-R | 9575-L | 9575-P |
| 9575-T | 9576-O | 9576-P | 9576-T | 9576-V |
| 9248-N1 | 9248-P2 | 9248-T3 | 9248-Y1 | 9248-G |
| 9248-N | 9248-O2 | 9248-R | 9248-T | |
| *Backing | | 3½ yards | 9571-C | |

Making the Quilt

- Referring to the Quilt Diagram, choose 4 fabrics for a block. Feel free to arrange the prints as you wish. Cut the patches required for one block, including Fabric C patches. Note that some patches in the quilt are cut so stripes run diagonally in the patches. Some patches must be “fussy-cut” for the design.
- Referring to Diagram 1, make 4 Flying Geese for one block as follows. Draw a diagonal line on the wrong side of 8 Print #4 ($2\frac{1}{2}$ ") squares. Place a marked square on one end of a Print #1 ($2\frac{1}{2}$ " x $4\frac{1}{2}$ ") rectangle, right sides together (Diagram 1). Sew on the marked line; trim away and discard excess fabric. Press open. Repeat this process on the opposite end of the rectangle to make a Flying Geese. Make 4 alike.
- Referring to the block diagram, join the Flying Geese and other patches in 5 horizontal rows. Join the rows to make a block.
- Repeat these steps to make a total of 17 blocks, cutting patches to duplicate the quilt, or choosing and arranging prints according to your design sensibilities. Note that in the quilt there are 3 “blue” blocks, 2 “yellow” blocks, 6 “maroon” blocks, 2 “green” blocks, and 4 “neutral” blocks. Follow this scheme, or plan your own.
- Referring to the Quilt Diagram, position the blocks, $12\frac{1}{2}$ " sashes, Fabric C triangles, and long sashes on a design wall or flat surface. Once you are satisfied with the overall look, join blocks and short sashes in diagonal rows.
- Add Fabric C quarter-square triangles at the ends of rows where needed, and in the orientation shown. Note: Align the 90-degree corner of the Fabric C triangle with the corner of a block/short sash. Trim any points of the triangles where they stick out to prepare the block rows for the next step.
- Sew the long sashes between rows, noting that they are cut extra long for insurance and will be trimmed later. When joining the block rows, be careful that the blocks align with one another from row to row. Once the rows and sashes are joined, trim long sashes where needed. Center and sew Fabric C half-square triangles to all 4 corners. Trim the outer edges of the quilt, leaving a generous seam allowance all around.

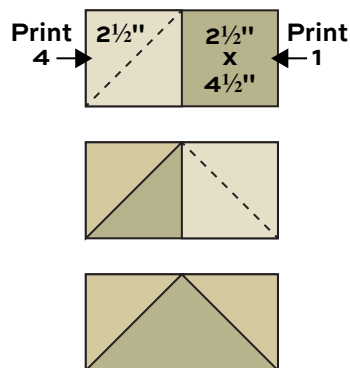
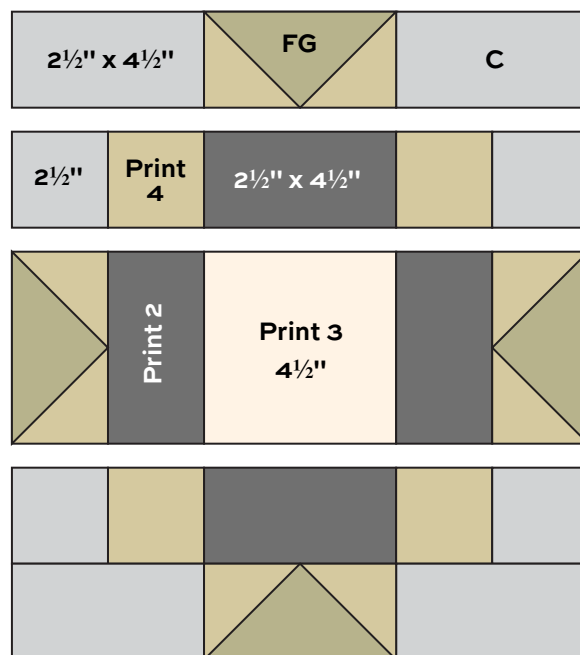


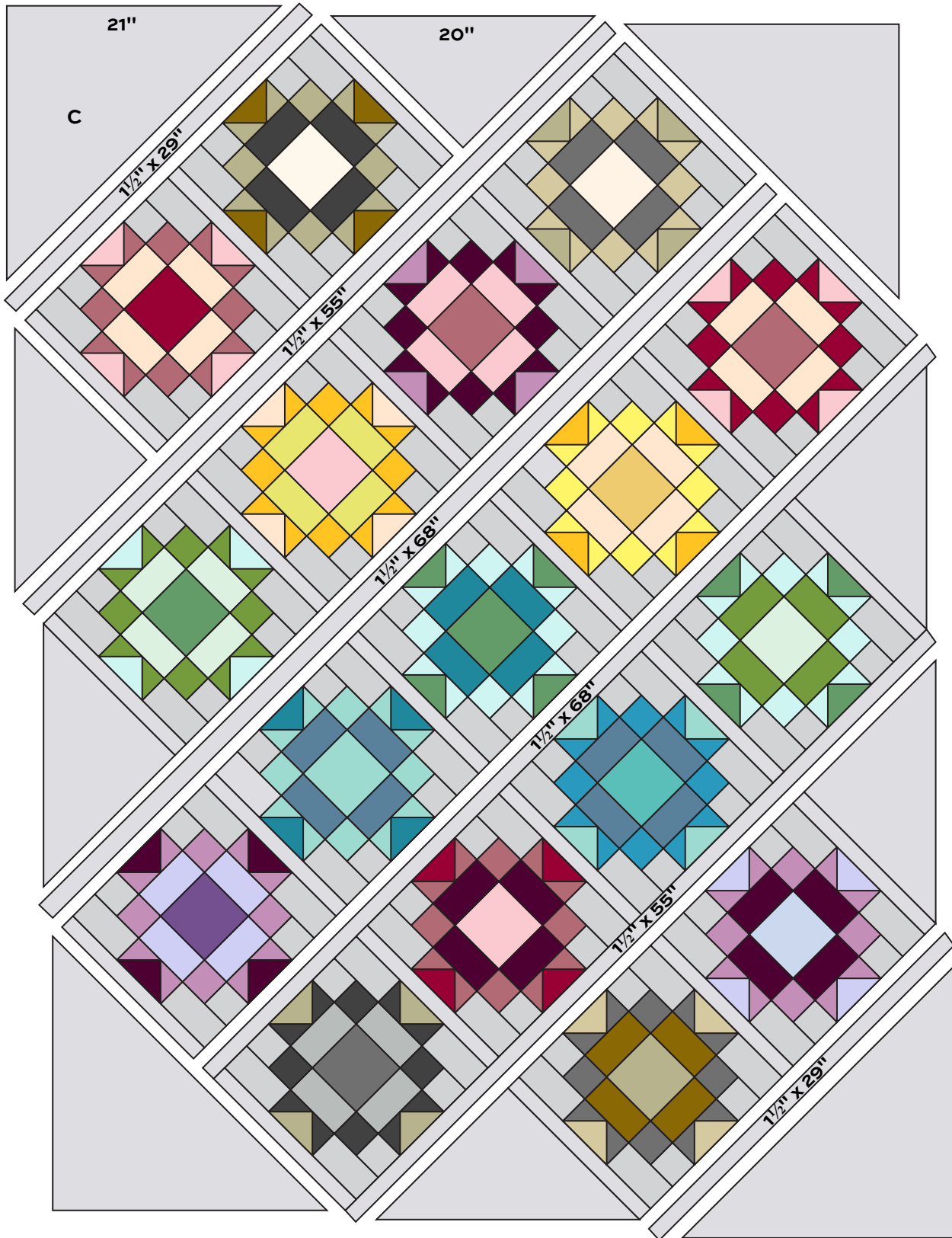
Diagram 1 – Flying Geese
Make 4 per block



Block – Make 17

Finishing the Quilt

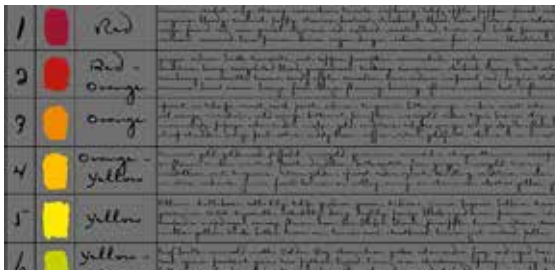
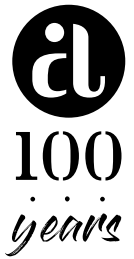
- Layer the quilt with batting and backing and baste. Quilt in the ditch around block patches. Quilt around the printed motifs in the blocks. Quilt Fabric C outer triangles with a grid of squares on point, or as you wish. Bind to finish the quilt.



Quilt Diagram

Prism

GIUCY GIUCE



9571 C



9571 L



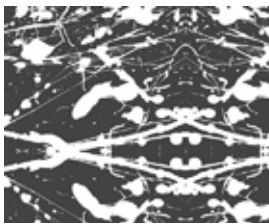
9572 G



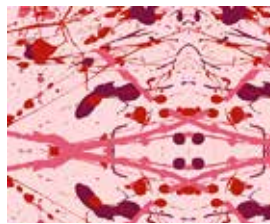
9572 O



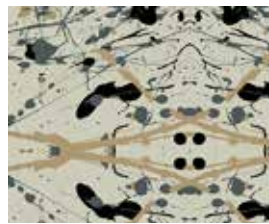
9572 P



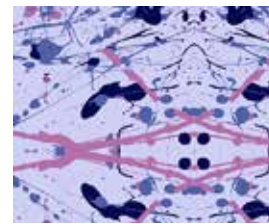
9573 C



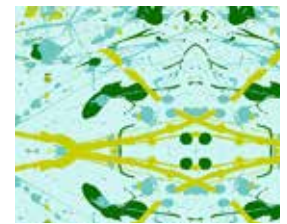
9573 E



9573 N



9573 P



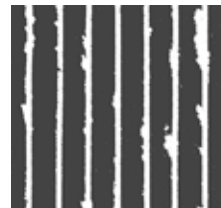
9573 T



9574 B



9574 C



9575 C



9575 L



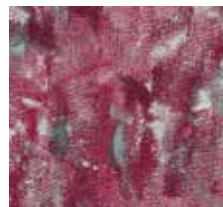
9576 O



9576 P



9574 G



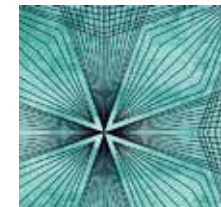
9574 R



9575 P



9575 T



9576 T



9576 V



9248 N1



9248 P2



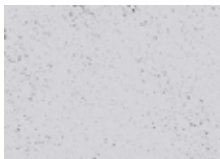
9248 T3



9248 Y1

All fabrics are used in quilt pattern.
Fabrics shown are 25% of actual size.

Additional fabric from **Spectrastatic** by Giucy Giuce



9248-CL



9248-G



9248-N



9248-O2



9248-R



9248-T

andover : makower uk

Free Pattern Download Available

1384 Broadway New York, NY 10018
Tel. (800) 223-5678 • andoverfabrics.com