

# Chesapeake

DI FORD-HALL



Chesapeake Quilt designed by: **Di Ford-Hall**  
Quilt Size: 90" x 90" ■ [andoverfabrics.com](http://andoverfabrics.com)

andover • [makower.uk](http://makower.uk)

Free Pattern Download Available

1384 Broadway New York, NY 10018  
Tel. (800) 223-5678 • [andoverfabrics.com](http://andoverfabrics.com)

6/15/19

# Chesapeake Quilt



Introducing Andover Fabrics new collection: **CHESAPEAKE** by Di Ford-Hall

Quilt designed by Di Ford-Hall

Quilt finishes 90" x 90"

1 Center Block: 29" x 29"

40 Nine-Patch Blocks: 9" x 9"

56 Border Blocks: 6" x 6"

*This heirloom-quality quilt will be cherished for its medallion setting, reproduction fabrics, and time-honored patchwork. Modern-day quick piecing techniques are incorporated to make easier work. Be prepared to enjoy the ooohs and aaahs when the quilt is displayed.*

## Cutting Directions

**Note:** Read assembly directions before cutting patches. All measurements are cut sizes and include ¼" seam allowances. A fat ¼ is an 18" x 20"-22" cut. Borders are cut the exact lengths required plus ¼" seam allowances. WOF designates the width of fabric from selvedge to selvedge (approximately 42" wide).

### Fabric A

Fussy-cut (8) flower motifs for appliqué (read Step 7 first)

### Fabric B

Cut (60) setting squares 1½" x 1½"

### Fabric C

Cut (1) square 4½" x 4½" for star center

Cut (20) squares 3½" x 3½" for nine-patch blocks

### Fabric D

Cut (20) squares 3½" x 3½" for nine-patch blocks

Cut (12) squares 3" x 3" for HST (read Step 2 first)

### Fabric E

Cut (100) sashes 1½" x 9½"

Cut (112) strips 1¼" (or ¾") x 10" (read Step 11 first)

Cut (4) squares 3" x 3" for HST (read Step 2 first)

Cut (12) squares 2½" x 2½"

Cut (4) rectangles 2½" x 4½" for flying geese

### Fabric F

Cut (16) squares 3½" x 3½" for nine-patch blocks

Cut (8) squares 2½" x 2½" for flying geese

### Fabric G

Cut (16) squares 3½" x 3½" for nine-patch blocks

Cut (16) squares 3" x 3" for HST (read Step 2 first)

Cut (4) rectangles 2½" x 4½" for flying geese

Cut (12) squares 2⅞" x 2⅞", cut in half diagonally to make 24 half-square triangles

Cut (4) squares 2½" x 2½"

## Fabric Requirements

		Yardage	Fabric
<b>Fabric A</b>	appliqué	¼ yard	9323-L
<b>Fabric B</b>	setting	fat ¼ yard	9325-RG
<b>Fabric C</b>	blocks	⅜ yard	9327-NE
<b>Fabric D</b>	blocks	⅜ yard	9327-RN
<b>Fabric E</b>	blocks, sash	2½ yards	9329-N
<b>Fabric F</b>	blocks	fat ¼ yard	9331-NE
<b>Fabric G</b>	blocks	½ yard	9331-R
<b>Fabric H</b>	blocks, border	2½ yards	9332-LG
<b>Fabric I</b>	blocks, binding	1¼ yards	9332-NK
<b>Fabric J</b>	blocks	2¼ yards	9325-NE
<b>6 Prints</b>	blocks	fat ¼ yard each	
	9326-LN	9328-LN	9328-RB 9330-LG
	9331-L	9332-RB	
<b>7 Prints</b>	blocks	fat ¼ yard ea.	
	9326-NR	9326-RB	*9327-L 9328-NE
	9330-NE	9330-RB	9330-RN
<b>Backing</b>		8¼ yards	*9327-L
<i>Optional:</i>	1 yard of 42"-wide lightweight fusible webbing (such as Wonder Under) or 2 yards of 22"-wide webbing (Steam-a-Seam)		

### Fabric H

Cut (2) top/bottom borders 4" x 78½", cut lengthwise

Cut (2) side borders 4½" x 71½", cut lengthwise

Cut (4) rectangles 9" x 12½"

Cut (4) squares 9" x 9"

Cut (20) squares 3½" x 3½" for nine-patch blocks

### Fabric I

Cut (10) strips 2½" x WOF for binding

Cut (20) squares 3½" x 3½" for nine-patch blocks

### Fabric J

Cut (56) squares 6½" x 6½" for border blocks

Cut (16) squares 3½" x 3½" for nine-patch blocks

**6 Prints** From each:

Cut (20) squares 3½" x 3½" for nine-patch blocks

**7 Prints** From each:

Cut (16) squares 3½" x 3½" for nine-patch blocks

### Backing

Cut (2) panels 33" x 98", pieced to fit quilt top with overlap on all sides



# Chesapeake Quilt

## Making the Quilt

1. The center block uses flying geese units. Draw a diagonal line on the wrong side of each Fabric F  $2\frac{1}{2}$ " square. Place a marked square on one end of a Fabric E  $2\frac{1}{2}$ " x  $4\frac{1}{2}$ " rectangle, right sides together (Diagram 1). Sew on the marked line; trim away and discard excess fabric. Press open. Repeat this process on the opposite end of the rectangle (Diagram 2) to make a flying geese unit 1. Make 4 total with these fabrics. Repeat these steps to make 4 flying geese unit 2 using Fabric G rectangles and Fabric E squares.

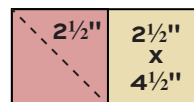


Diagram 1

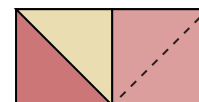
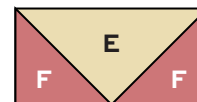


Diagram 2



Flying Geese 1  
Make 4

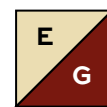


Flying Geese 2  
Make 4

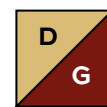
2. The center block star uses half-square triangles (HST) that finish 2". If you wish to give yourself some "wriggle room" with these small units, cut squares 3". These units will be trimmed after stitching. If you wish to eliminate the trimming step, cut squares  $2\frac{7}{8}$ ". Use your favorite method to make HST, or follow these directions. Draw a diagonal line on the wrong side of each Fabric E 3" square (Diagram 3). Place a marked square on a Fabric G square, right sides together. Sew  $\frac{1}{4}$ " seam on each side of the marked line; cut apart on the marked line. Press open to make pieced HST. Trim the squares to  $2\frac{1}{2}$ " if needed. Make 8 total HST 1 with these fabrics. Repeat the steps to make 24 HST 2 using Fabric D and Fabric G squares.



Diagram 3



HST 1  
Make 8

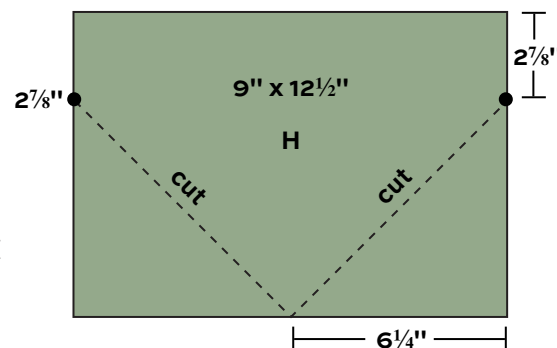


HST 2  
Make 24

3. The center block finishes 29" square. There are multiple components to the star, so following these steps carefully will result in a successful block. Refer to the center block diagram. For the side of the center square, join a flying geese 1 and a flying geese 2 as shown. Sew to the side of the center Fabric C square. Repeat on the opposite side.

4. For the top and bottom of the center, join 2 HST 1, a flying geese 1 unit, and 2 Fabric E  $\frac{1}{2}$ " squares to make a horizontal row, paying attention to the order and orientation of the units. Make a second row like this. Likewise, join 2 HST 1, a flying geese unit 2, and 2 Fabric G  $2\frac{1}{2}$ " squares to make a horizontal row. Make a second row like this. Sew one of each row to the top of the center in the order shown. Repeat on the bottom.

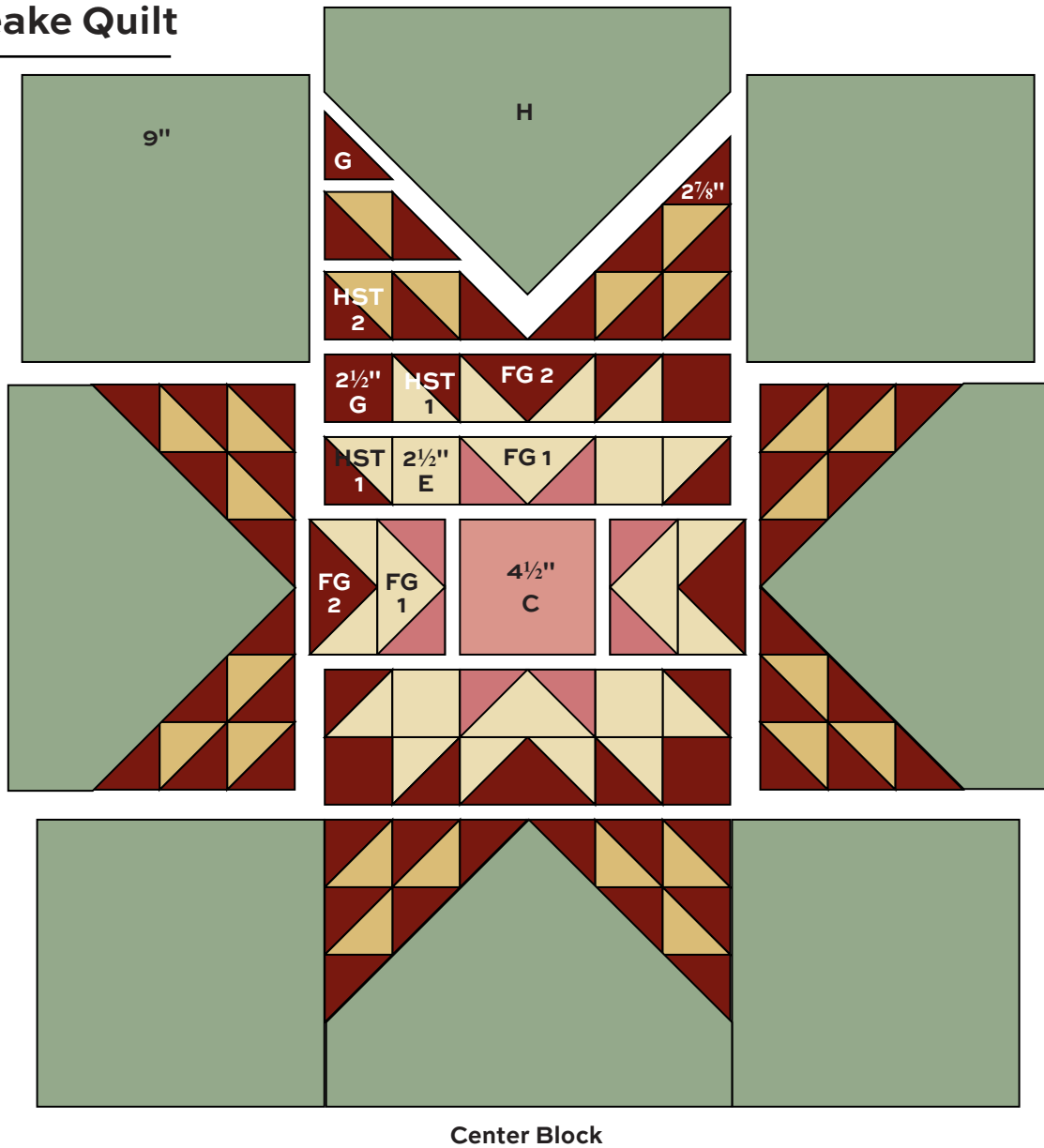
5. Refer to Diagram 4. Mark a dot  $2\frac{7}{8}$ " down from a corner of a Fabric H rectangle as shown. Repeat on the opposite side. Mark a dot  $6\frac{1}{4}$ " in from the bottom corner as shown. Align a ruler from a side dot to the bottom dot, and cut along the line to remove the corner. Repeat on the other side. Repeat to trim all 4 rectangles. The star points will be sewn to these patches later.



Star Cutting - Diagram 4

6. The star points are made of HST 2 and Fabric G half-square triangles. Referring to the center block diagram, arrange 3 HST 2 and 3 Fabric G  $2\frac{7}{8}$ " triangles in rows as shown. Be sure that the HST are turned correctly to make the design. Join the rows to make a pieced triangle. Sew to one cut corner of a Fabric H rectangle. Repeat these steps to make a second pieced triangle for the other cut corner of Fabric H, noting the orientation of the HST. Sew the second star point to the H. Repeat to make a total of 4 star point units like this. Sew a unit to opposite sides of the center. Sew Fabric H 9" squares to the remaining star point units. Sew to the top and bottom. The block should measure  $29\frac{1}{2}$ " from edge to edge.

# Chesapeake Quilt

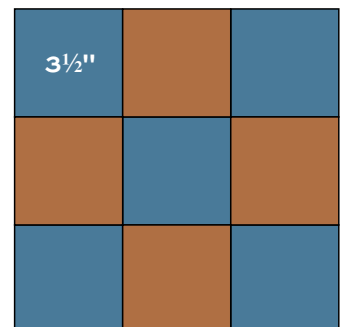


Center Block

7. Fussy-cut (8) flower bouquets for the center block appliqué, referring to the quilt photograph for ideas of what to cut. If you choose to fuse the flowers, follow manufacturer's instructions to press the fusible web to the back side of the chosen flowers. Cut motifs out leaving no allowance. Position the fussy-cut floral patches on each Fabric H patch, referring to the quilt photograph for placement. Fuse each patch in place, following manufacturer's instructions. Finish the edges with a decorative machine stitch using contrasting thread, or use an invisible thread with a blind machine stitch.

If you prefer to hand appliqué the flowers, fussy-cut around the chosen motifs, leaving a turn-under allowance. Press under the allowances. Position the motifs on the Fabric H patches. Appliqué the turned under allowances using a blind hemstitch.

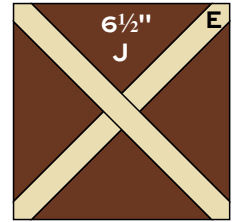
8. The nine-patch blocks are made in 10 combinations of 2 fabrics. Each combination is used in 4 blocks. Refer to the quilt photograph for fabric placement, or join the  $3\frac{1}{2}$ " squares in any combination of your choice. Make a total of 40 nine-patch blocks.



Nine-Patch Block – Make 40

# Chesapeake Quilt

- Referring to the quilt diagram, arrange the nine-patch blocks with Fabric E sashes and Fabric B setting squares around the center block. Once you are satisfied with the arrangement, join the blocks and sashes to make 4 long horizontal block rows and 6 short block rows. Join the sashes and setting squares to make 6 long sash rows and 4 short sash rows. Join the block and sash rows to make larger units. Sew the smaller units to the sides of the center block. Sew the longer units to the top and bottom.
- Sew shorter Fabric H borders to the sides. Sew longer borders to the top and bottom.
- The border blocks have diagonal strips appliquéd or fused in place. Each method requires a different cut-width strip. These are added easily in one of two ways.



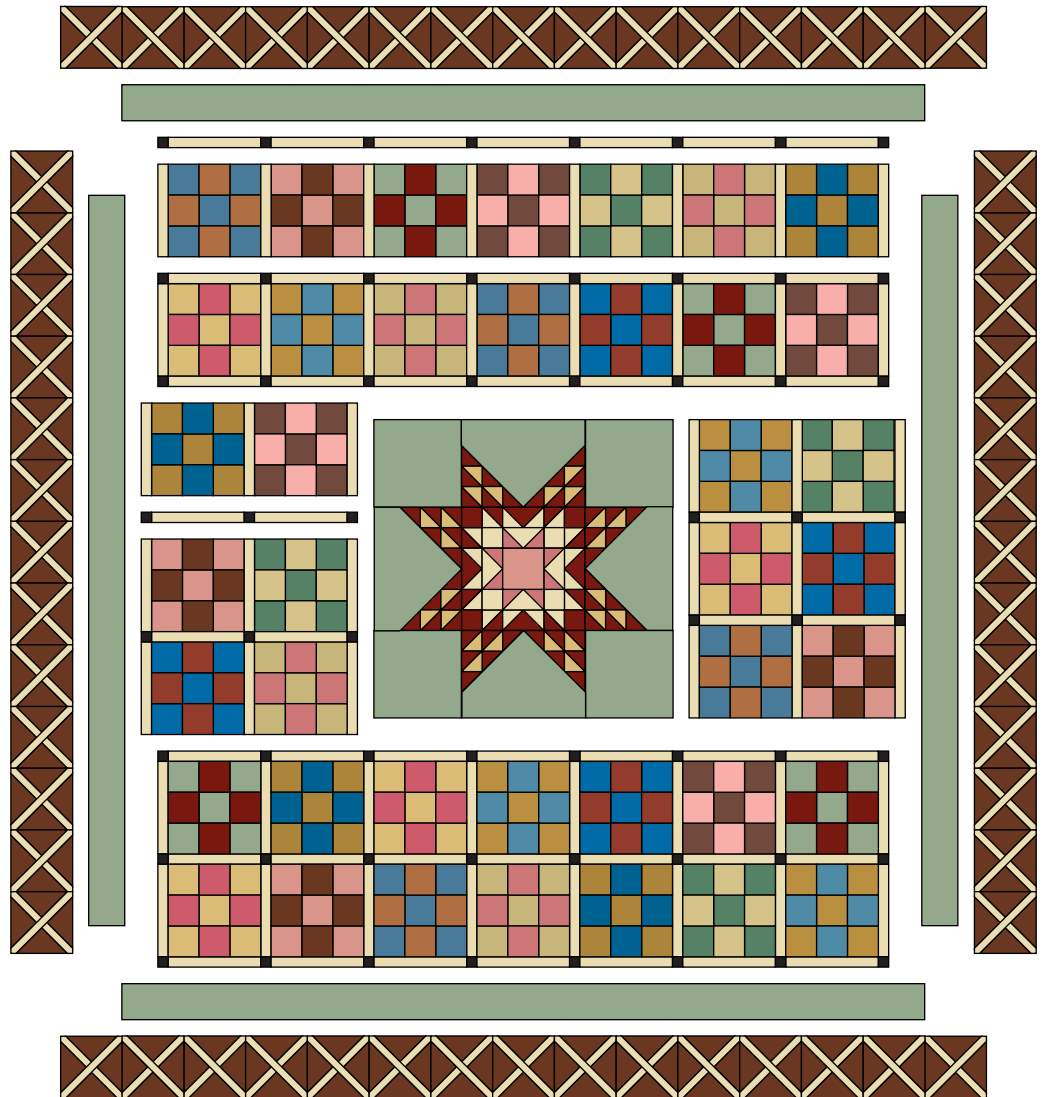
**Border Block – Make 56**

*Method 1 Appliquéd:* To prepare each Fabric E 1 1/4" x 10" strip, turn under both long edges 1/4" so the raw edges meet on the back of the 1 1/4" strip. Press the strip. It should be 3/4" x 10" at this point. Position a strip diagonally to a Fabric J 6 1/2" square. Be sure raw edges are on back of strip. Stitch along both edges with a straight or hidden stitch. Position a second prepared strip diagonally in the opposite direction. Stitch in place. Trim strips even with the squares. Make 56 border blocks.

*Method 2 Fused:* If you prefer to fuse these strips, fuse lightweight webbing to the back of a 22" x 42" rectangle of Fabric E following manufacturer's directions. Cut 112 strips that are 3/4" x 10". Fuse 2 strips diagonally to each Fabric J 6 1/2" square. Finish edges with a machine zigzag stitch or as you wish. Trim strips even with the squares. Make 56 border blocks.

## Finishing the Quilt

- Layer the quilt with batting and backing and baste. Quilt in the ditch around borders and block patches. Quilt around the appliquéd motifs. Quilt Fabric H borders as you wish. Bind to finish the quilt.



**Quilt Diagram**



# Chesapeake

BY DI FORD-HALL



9323-L\*



9323-N



9323-R



9325-LG



9326-LN\*



9325-NE\*



9326-NR\*



9324-L



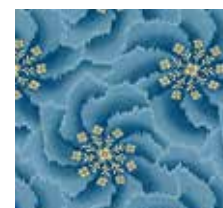
9324-N



9324-RN



9325-RG\*



9326-RB\*



9327-L\*



9327-NE\*



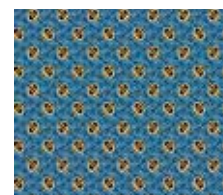
9327-RN\*



9328-LN\*



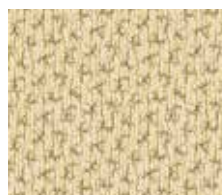
9328-NE\*



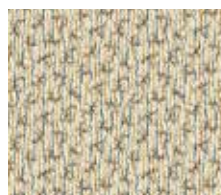
9328-RB\*



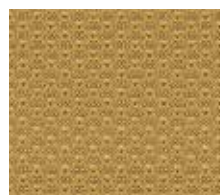
9329-LG



9329-N\*



9329-RB



9331-L\*



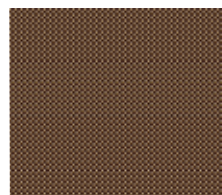
9331-NE\*



9331-R\*



9332-LG\*



9332-NK\*



9332-RB\*



9333-LG



9333-NR



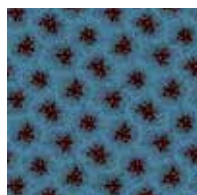
9333-RB



9330-LG\*



9330-NE\*



9330-RB\*



9330-RN\*

All fabrics are used in quilt pattern.

Fabrics shown are 15% of actual size.

andover : [makower uk](http://makower.uk)

Free Pattern Download Available

1384 Broadway New York, NY 10018  
Tel. (800) 223-5678 • [andoverfabrics.com](http://andoverfabrics.com)