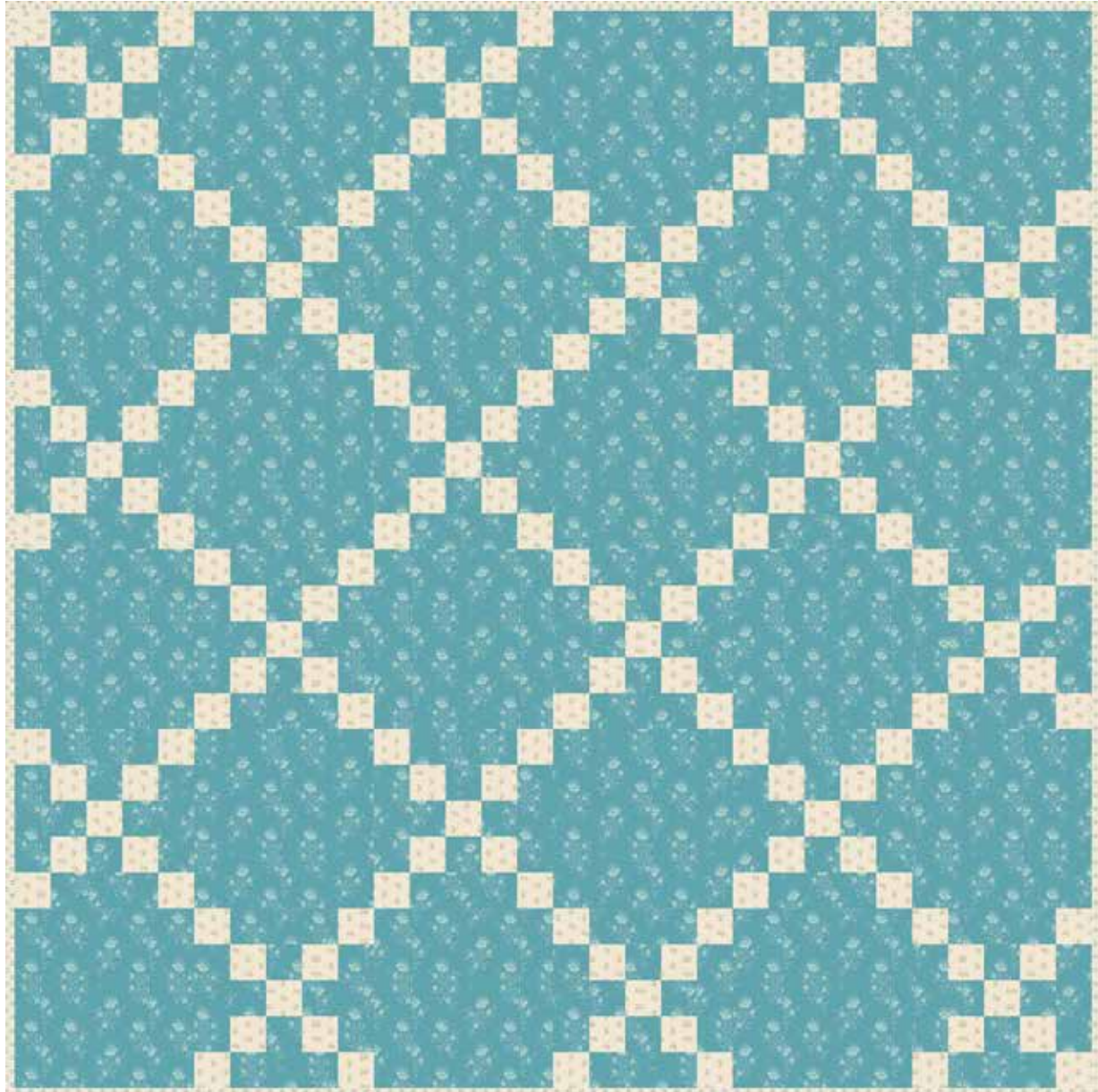


Royal Blue

EDYTA SITAR OF LAUNDRY BASKET QUILTS



Norway

Quilt designed by:

Edyta Sitar

Quilt Size: 60" x 60"

andoverfabrics.com

About Royal Blue

There is something special in all of us, just like the fabrics in this “Royal Blue” collection. Some projects in quilting take longer than others. These projects quite often become our favorites because of how timeless they are. The fabrics in this group are saturated with the most beautiful shades of blue and will create a perfect palette for those quilts. Starting with delicate lights, to dreamy mediums, and everlasting darks, you’re likely to create an heirloom quilt to pass down from generation to generation.

andover



makower.uk

Free Pattern Download Available

1384 Broadway New York, NY 10018
Tel. (800) 223-5678 • andoverfabrics.com

Norway



Featuring Andover Fabrics new Collections: Royal Blue by Edyta Sitar

Quilt designed by Edyta Sitar of Laundry Basket Quilts

Quilt finished 60" x 60"

Cutting Directions

Note: Read assembly directions before cutting patches. Borders are cut to exact length required plus $\frac{1}{4}$ " seam allowance. WOF designates the width of fabric from selvedge to selvedge (approximately 42" wide).

Fabric A Cut (11) $2\frac{1}{2}$ " x WOF strips. Sub-cut the strips into (162) $2\frac{1}{2}$ " squares.

Fabric B Cut (5) $10\frac{1}{2}$ " x WOF strips. Sub-cut the strips into (18) $10\frac{1}{2}$ " squares.
Cut (12) $2\frac{1}{2}$ " x WOF strips. Sub-cut the strips into (72) $2\frac{1}{2}$ " x $6\frac{1}{2}$ " strips.
Cut (5) $2\frac{1}{2}$ " x WOF strips. Sub-cut the strips into (72) $2\frac{1}{2}$ " squares.

Binding Cut (6) $2\frac{1}{2}$ " x WOF strips for the binding.

Backing Cut (2) 68" x WOF strips. Sew the strips together and trim to make (1) 68" x 68" backing.

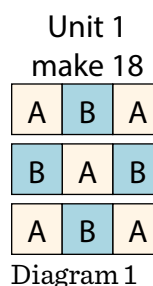
Fabric Requirements

| | | Yardage | Fabric |
|-----------------|-------------------|----------------------|---------|
| Fabric A | blocks | $\frac{7}{8}$ yard | 9186-BL |
| Fabric B | background | $2\frac{3}{4}$ yards | 9175-BT |
| Binding | | $\frac{2}{3}$ yard | 8515-BL |
| Backing | | 4 yards | 9174-BT |

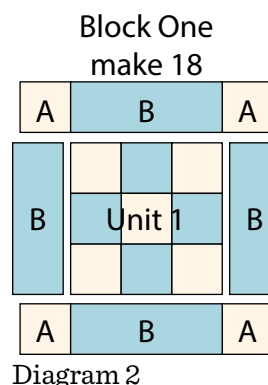
Making the Quilt

1. Block Assembly

Sew (1) $2\frac{1}{2}$ " Fabric A square to each side of (1) $2\frac{1}{2}$ " Fabric B square to make the top row. Repeat to make the bottom row. Sew (1) $2\frac{1}{2}$ " Fabric B square to each side of (1) $2\frac{1}{2}$ " Fabric A square to make the middle row. Sew the (3) rows together to make (1) Unit 1 block (Diagram 1). Repeat to make (18) Unit 1 blocks total.



2. Sew (1) $2\frac{1}{2}$ " Fabric A square to each end of (1) $2\frac{1}{2}$ " x $6\frac{1}{2}$ " Fabric B strip to make the top row. Repeat to make the bottom row. Sew (1) $2\frac{1}{2}$ " x $6\frac{1}{2}$ " Fabric B strip to each side of (1) Unit 1 block to make the middle row. Sew the (3) rows together to make (1) Block One square (Diagram 2). The Block should measure $10\frac{1}{2}$ " square. Repeat to make (18) Block One squares total.



Norway

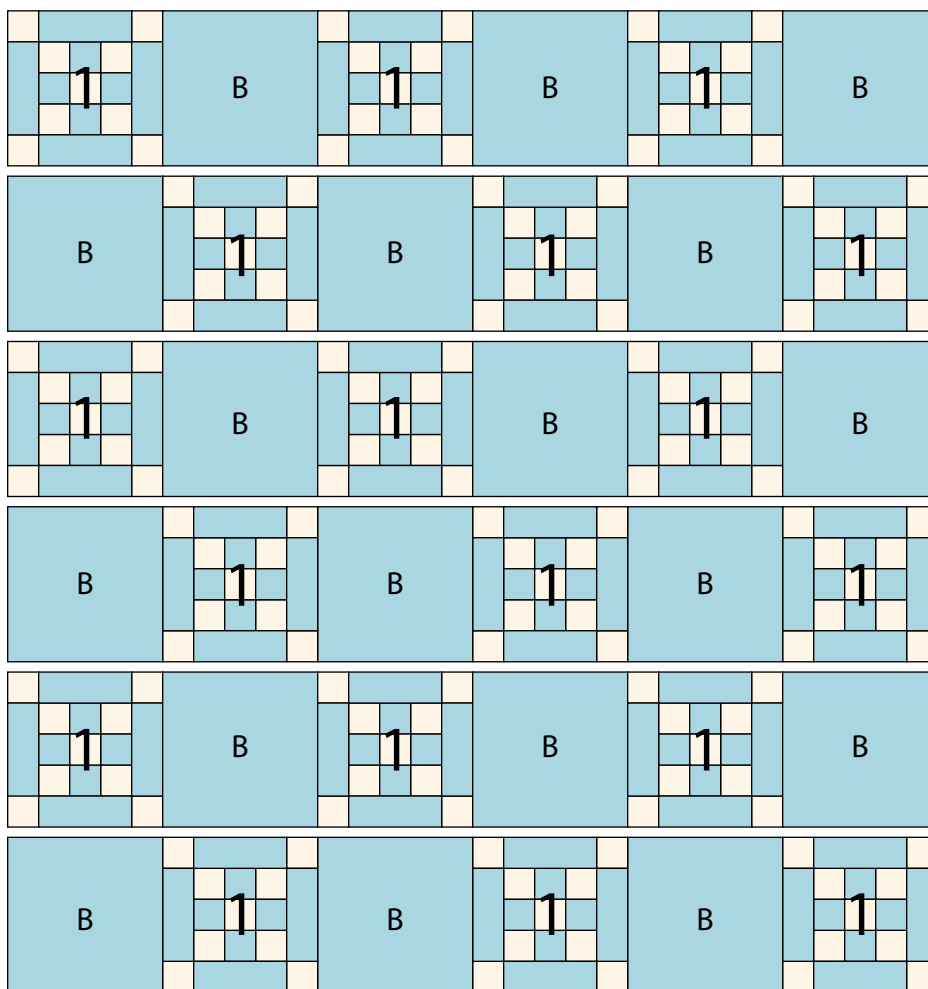
Quilt Top Assembly

(Refer to the Quilt Layout when assembling the quilt top.)

3. Sew (3) Block One squares and (3) 10 1/2" Fabric B squares together, alternating them, to make Row One. Repeat to make Rows Three and Five.
4. Sew (3) 10 1/2" Fabric B squares and (3) Block One squares together, alternating them, to make Row Two. Repeat to make Rows Four and Six.
5. Sew the (6) rows together in numerical order to make the quilt top.

Finishing the Quilt

6. Layer and quilt as desired.
7. Sew the (6) Binding strips together, end to end with a 45-degree seams, to make the binding. Fold this long strip in half lengthwise with wrong sides together and press.
8. Bind as desired.



Quilt Layout

Royal Blue

EDYTA SITAR OF LAUNDRY BASKET QUILTS



8511-B1



8515-BL $\frac{2}{3}$ yd
(includes binding)



9174-B



9174-BL



9174-BT 4 yds
(includes backing)



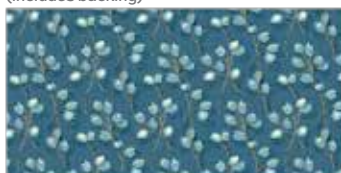
9175-B



9175-BN



9175-BT $2 \frac{3}{4}$ yds



9176-B



9176-BL



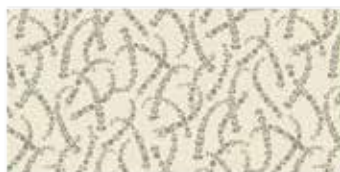
9177-B



9178-B



9179-B



9179-BN



9180-B



9181-B



9181-BN



9181-BT



9182-BN



9183-B



9184-BL



9185-B



9185-BL



9186-BL $\frac{7}{8}$ yd

About Our Fabrics

A recognized leader in the quilting industry, Andover Fabrics features designs by a wide variety of talented artists and licenses, including Downton Abbey and Eric Carle's Very Hungry Caterpillar. Catering to the tastes of creative and dedicated quilters, Andover has a style for everyone — authentic reproductions, romantic florals, modern and more.

Fabrics shown are 25% of actual size.