

# Greatest Hits Vol. 1

BY LIBS ELLIOTT



Sparks Quilt designed  
by: **Libs Elliott**

Quilt Size: **68" x 68"**

[andoverfabrics.com](http://andoverfabrics.com)

## About Greatest Hits Vol. 1

Greatest Hits Vol. 1 is like an album of your favourite tunes. The classics never go out of style, so we've chosen some key prints from previous collections and brought them back to life. This group acts well as a stash-building blender but also stands strong on its own. – Libs Elliott

andover



[makower.uk](http://makower.uk)

Free Pattern Download Available

1384 Broadway New York, NY 10018  
Tel. (800) 223-5678 • [andoverfabrics.com](http://andoverfabrics.com)

# Sparks Quilt



Introducing Andover Fabrics new collection: **GREATEST HITS VOL. 1** by Libs Elliott

Quilt designed by Libs Elliott

Quilt finishes 68" x 68"  
24 Flying Geese Blocks: 6" x 12"  
1 Center Star Block: 24" x 24"

*An unusual mixture of rainbow bright and neutral gray prints lends contemporary flair to this quilt. The dynamic design carries the eye in and out of the quilt center. Strip piecing methods make easy work of the striped rainbow-color units.*

## Cutting Directions

**Note:** Read assembly directions before cutting patches. All measurements are cut sizes and include 1/4" seam allowances. A fat 1/4 is an 18" x 20"-22" cut. Borders are cut the exact lengths required plus 1/4" seam allowances. WOF designates the width of fabric from selvedge to selvedge (approximately 42" wide).

### Fabric A

Cut (4) sashes 6 1/2" x 32" (cut extra long for ease of construction)  
Cut (2) squares 6 7/8" x 6 7/8", cut in half diagonally to make 4 half-square triangles

### Fabric B

Cut (12) squares 6 7/8" x 6 7/8", cut in half diagonally to make 24 half-square triangles

### Fabric C

Cut (4) squares 6 7/8" x 6 7/8", cut in half diagonally to make 8 half-square triangles

### Fabric D

Cut (1) square 13 1/4" x 13 1/4", cut in half diagonally twice to make 4 quarter-square triangles for Flying Geese  
Cut (1) square 12 1/2" x 12 1/2" for Star Block

### Fabric E

Cut (1) square 13 1/4" x 13 1/4", cut in half diagonally twice to make 4 quarter-square triangles for quilt corners

### Fabric F

Cut (4) sashes 6 1/2" x 32" (cut extra long for ease of construction)  
Cut (2) squares 6 7/8" x 6 7/8", cut in half diagonally to make 4 half-square triangles

## Fabric Requirements

		Yardage	Fabric
<b>Fabric A</b>	blocks	7/8 yard	8593-MB
<b>Fabric B</b>	blocks	3/4 yard	8593-MC
<b>Fabric C</b>	blocks	fat 1/4 yard	8593-MK
<b>Fabric D</b>	blocks	1/2 yard	8737-MC1
<b>Fabric E</b>	corners	fat 1/4 yard	8737-MK1
<b>Fabric F</b>	sash	7/8 yard	8739-MB
<b>*Fabric G</b>	blocks	1/2 yard	8739-MC
<b>Fabric H</b>	blocks	3/4 yard	9011-ML
<b>**Fabric I</b>	side units	7/8 yard	9012-MB
<b>3 Gray Prints</b>	blocks	fat 1/4 yard each	
		9010-MC	9010-ML 9012-C
<b>15 Brights</b>	side units	fat 1/4 yard each	
		8593-ME1	8593-MP 8593-MT
		8737-ME	8737-MG 8739-ME
		8739-MG	9010-ME 9010-MP
		9010-MT	9011-MB 9011-ME
		9011-MP	9012-E 9012-G
<b>*Backing</b>		4 1/2 yards	8739-MC
<b>**includes binding</b>			

### Fabric G

Cut (1) square 13 1/4" x 13 1/4", cut in half diagonally twice to make 4 quarter-square triangles for Flying Geese  
Cut (4) squares 6 1/2" x 6 1/2" for Star Block

### Fabric H

Cut (1) square 13 1/4" x 13 1/4", cut in half diagonally twice to make 4 quarter-square triangles for Star Flying Geese  
Cut (8) squares 6 7/8" x 6 7/8", cut in half diagonally to make 16 half-square triangles

### Fabric I

Cut (7) strips 2 1/2" x WOF for binding  
Cut (8) strips 2" x 12 1/2" for side units

### 3 Gray Prints From each:

Cut (1) square 13 1/4" x 13 1/4", cut in half diagonally twice to make 4 quarter-square triangles for Flying Geese (12 total)

### 15 Brights From each:

Cut (8) strips 2" x 12 1/2" for side units

### Backing

Cut (2) panels 38" x 76", pieced to fit quilt top with overlap on all sides

# Sparks Quilt

## Making the Quilt

**1. Star Block** The center of this block is made with quick stitch-and-flip piecing methods. Draw a diagonal line on the wrong side of each Fabric G 6½" square. Referring to Diagram 1, place a marked square on a Fabric D 12½" square, right sides together, aligning raw edges at the corner. Stitch on the drawn line; trim away and discard excess fabric. Press open. Repeat on the opposite corner, watching orientation of the sewing. Repeat on the remaining corners.

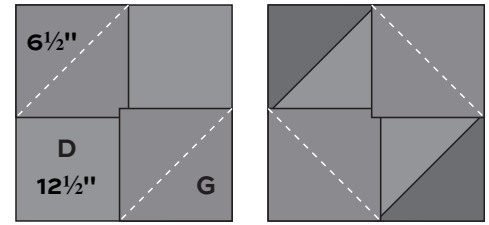


Diagram 1

**2.** Referring to Diagram 2, join Fabric A and Fabric F triangles to make 4 pieced squares (HST).

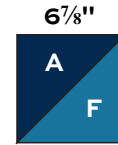


Diagram 2  
HST - Make 4

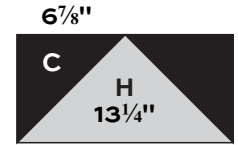


Diagram 3  
Star Flying Geese  
Make 4

**3.** The Star Flying Geese will be easier to piece if you first mark the sewing lines on the wrong side of the half-square and quarter-square triangle patches. Sew Fabric C triangles to the short sides of a Fabric H triangle, matching sewing lines (Diagram 3). The unit should measure 6½" x 12½". Make 4 Star Flying Geese units like this.

**4.** Join 4 HST, 4 Star Flying Geese, and the pieced center to make the Star Block (Diagram 4). Be sure to rotate the patches as shown to make the star design. Set aside.

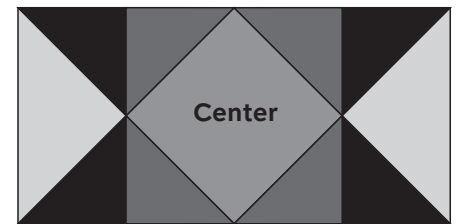


Diagram 4 - Star Block

**5. Flying Geese Units** Referring to Diagram 5 and Step 3, make 4 Flying Geese in each fabric combination shown. The Flying Geese should measure 6½" x 12½". Join 5 Flying Geese in the order shown to make a unit. Make 4 Flying Geese Units alike. Set aside.

**6. Side Unit** Referring to Diagram 6, join 8 different purple/pink 2" x 12½" strips to make a Block Y, noting fabric and value placement. Make 8 alike. Press seam allowances in 4 of the blocks toward the left. Cut in half diagonally as shown. It is important that you keep the blocks oriented as shown while cutting. Press seam allowances in other 4 blocks toward the right. Cut in half diagonally as shown. Label the triangles Y1 and Y2 as indicated. Set aside the triangles labeled "not needed" for a future project.

**7.** Referring to Diagram 7, repeat these steps with 8 different blue/green strips to make 8 Block Z. Press as for Block Y. Cut the Block Z diagonally in the direction shown. Label the pieced triangles Z1 and Z2 as shown. Set aside those "not needed" for a future project.

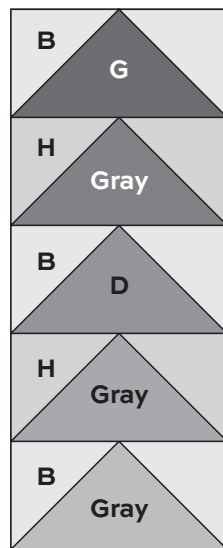
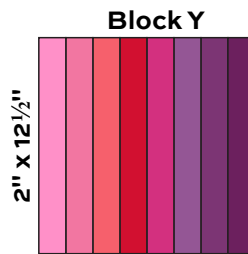
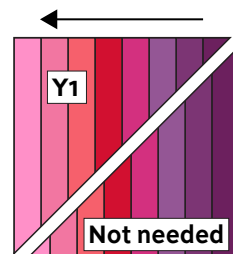


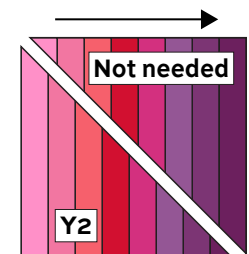
Diagram 5  
Flying Geese Unit - Make 4



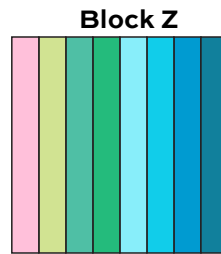
Make 8



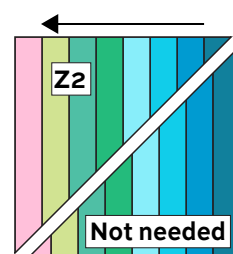
Cut 4 like this  
Diagram 6



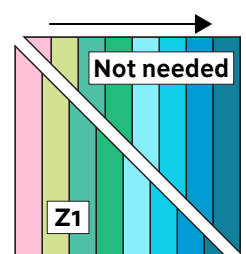
Cut 4 like this



Make 8



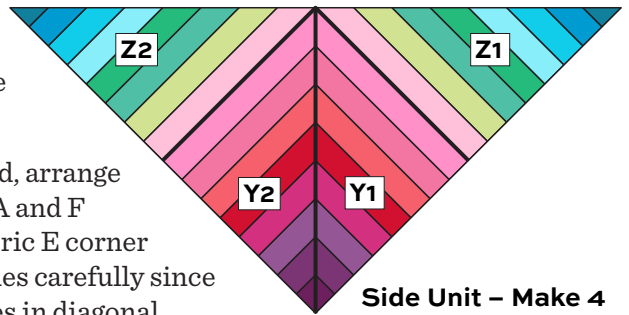
Cut 4 like this  
Diagram 7



Cut 4 like this

# Sparks Quilt

- Referring to the Side Unit diagram, join one of each kind of triangle to make a Side Unit. Make 4 Side Units alike. Stay stitch near the edge of the long side to prevent stretching of the bias edges.
- Referring to the Quilt Diagram, on a flat surface or design board, arrange the Flying Geese Units, Side Units, the Star Block, and Fabric A and F sashes as shown. The sash ends will be trimmed later. Sew Fabric E corner triangles to the ends of the Flying Geese Units. Handle E patches carefully since the short edges are on the bias. Join the blocks, units and sashes in diagonal rows. Join the rows. Trim the ends of the sashes even with the sides of the quilt.



## Finishing the Quilt

- Layer the quilt with batting and backing and baste. Quilt in the ditch around sashes and patches. Quilt inside larger patches as you wish. Bind to finish the quilt.





# Greatest Hits Vol. 1

BY LIBS ELLIOTT



8593-MB



8593-MC



8593-ME1



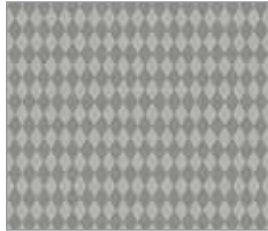
8593-MK



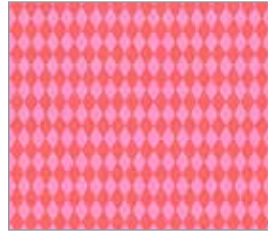
8593-MP



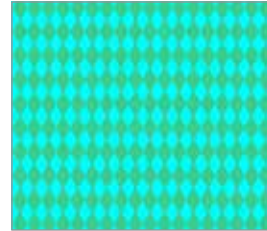
8593-MT



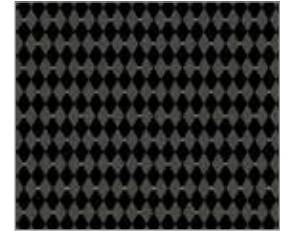
8737-MC1



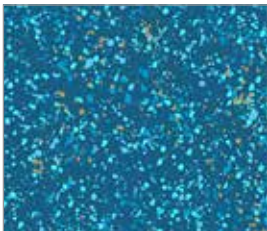
8737-ME



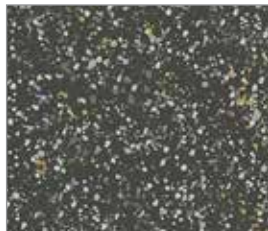
8737-MG



8737-MK1



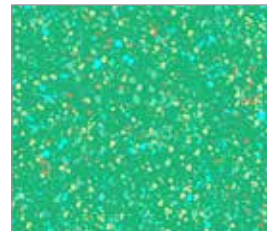
8739-MB



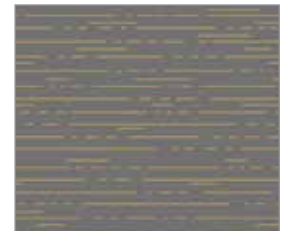
8739-MC



8739-ME



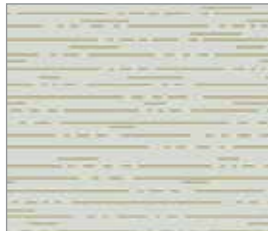
8739-MG



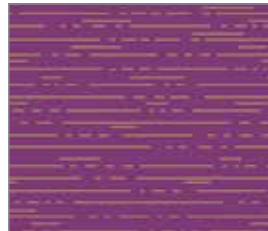
9010-MC



9010-ME



9010-ML



9010-MP



9010-MT



9011-MB



9011-ME



9011-ML



9011-MP



9012-C



9012-E



9012-G



9012-MB

All fabrics are used in quilt pattern.  
Fabrics shown are 25% of actual size.

Free Pattern Download Available

andover ••• makower uk

1384 Broadway New York, NY 10018  
Tel. (800) 223-5678 • andoverfabrics.com