

Bed of Roses

LAUNDRY BASKET QUILTS



Flower Shop

Quilt Design:

Edyta Sitar

Quilt Size: 59 1/2" x 76 1/2"

andoverfabrics.com

andover • makower.uk

Free Pattern Download Available

1384 Broadway New York, NY 10018

Tel. (800) 223-5678 • andoverfabrics.com

Flower Shop



Featuring Andover Fabrics new Collection: Bed of Roses by Laundry Basket Quilts

Quilt designed by Edyta Sitar of Laundry Basket Quilts

Quilt finished 59 1/2" x 76 1/2"

Cutting Directions

Note: Read assembly directions before cutting patches. Borders are cut to exact length required plus 1/4" seam allowance. WOF designates the width of fabric from selvedge to selvedge (approximately 42" wide).

Fabric A Select (63) 10" squares. From each square cut (1) 5" square, (4) 2 1/2" squares and (4) 2 1/2" x 5" strips (see Cutting Diagram below).

Binding Cut (7) 2 1/2" x WOF strips for the binding.

Backing Cut (2) 85" x WOF strips. Sew the strips together and trim to make (1) 68" x 85" backing.

5" sq.	2 1/2" x 5"	
	2 1/2" x 5"	
2 1/2" x 5"	2 1/2" sq.	2 1/2" sq.
2 1/2" x 5"	2 1/2" sq.	2 1/2" sq.

Cutting Diagram

Making the Quilt

1. Block Assembly

Select (1) 5" square and (4) 2 1/2" squares of the same fabric. Pair the squares with (4) 2 1/2" x 5" strips of a different fabric. Repeat so that you have (63) fabric sets total.

2. Sew (1) 2 1/2" square to each end of (1) 2 1/2" x 5" strip to make (1) Unit 1 strip (Diagram 1). Repeat to make a second Unit 1 strip.



Diagram 1

Fabric Requirements

		Yardage	Fabric
Fabric A	blocks	2 packs	3S-BED-X (10" squares)
Binding	binding	2/3 yard	8985-T
Backing	backing	4 3/4 yards	8993-TL

3. Sew (1) 2 1/2" x 5" strip lengthwise to opposite sides of (1) 5" square to make (1) Unit 2 strip (Diagram 2).

4. Sew (1) Unit 1 strip to the top and to the bottom of (1) Unit 2 strip to make (1) Block One square (Diagram 3).

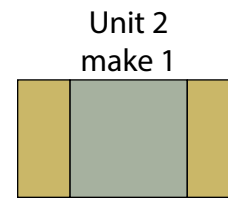


Diagram 2

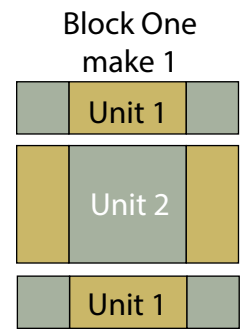


Diagram 3

5. Repeat Steps 2-4 with the remaining fabric sets to make (63) Blocks total.

Quilt Top Assembly

(Refer to the Quilt Layout when assembling the quilt top.)

6. Sew together (7) Blocks to make Row One. Repeat to make Row Two through Row Nine.

7. Sew together the (9) Rows, in numerical order, to make the quilt top.

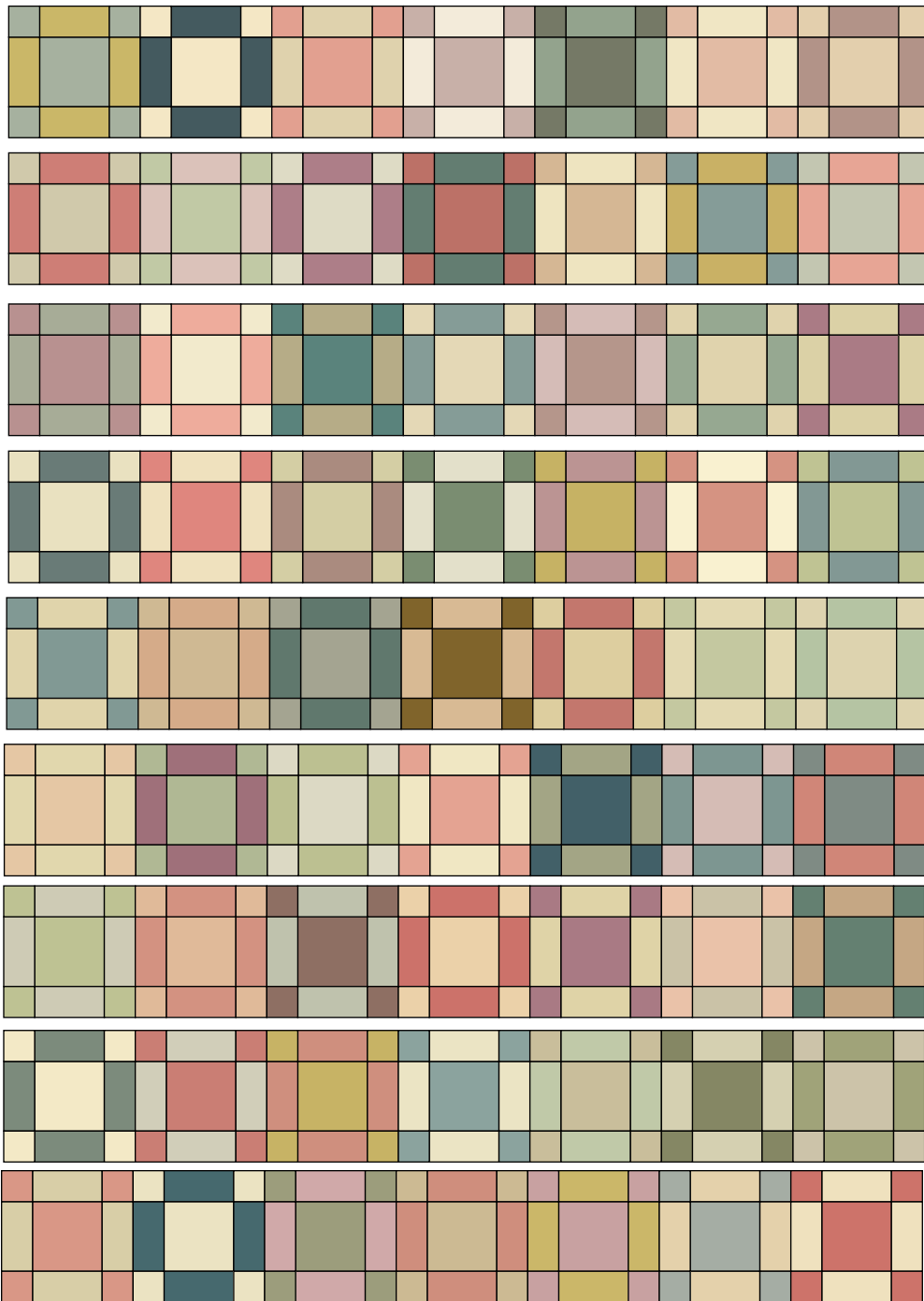
Finishing the Quilt

8. Layer and quilt as desired.

9. Sew the (7) binding strips together, end to end with a 45-degree seams, to make the binding. Fold this long strip in half lengthwise with wrong sides together and press.

10. Bind as desired.

Flower Shop



Quilt Layout

Bed of Roses

LAUNDRY BASKET QUILTS



8618-T



8985-G



8985-L



8985-T



8986-GP



8986-L



8986-T



8987-GP



8987-LE



8987-T



8988-GP



8988-LE



8988-T



8989-GL



8989-LE



8989-TL



8990-GP



8990-LE



8990-T



8990-TL



8991-G



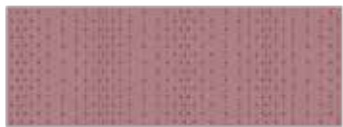
8991-L



8991-LE



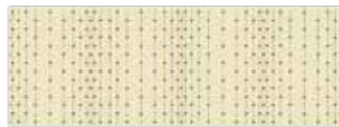
8991-TL



8992-GP



8992-GY



8992-TL



8993-LE



8993-TL



8994-GN



8994-T



8995-L

About Our Fabrics

A recognized leader in the quilting industry, Andover Fabrics features designs by a wide variety of talented artists and licenses, including Downton Abbey and Eric Carle's Very Hungry Caterpillar. Catering to the tastes of creative and dedicated quilters, Andover has a style for everyone — authentic reproductions, romantic florals, modern and more.

Fabrics shown are 25% of actual size.

andover • makower.uk

Free Pattern Download Available

1384 Broadway New York, NY 10018
Tel. (800) 223-5678 • andoverfabrics.com

NB: 3S- BED- X is a reference code for USA pre-cuts not available in UK/Europe.
 Below is a list of 10" squares found in each pre-cut pack.
 Bed of Roses Quilt uses two packs.

A-8985-L	2
A-8987-LE	2
A-8993-LE	2
A-8989-LE	2
A-8988-LE	2
A-8890-LE	2
A-8991-LE	2
A-8995-L	2
A-8986-GP	2
A-8987-GP	2
A-8990-GP	1
A-8988-GP	1
A-8992-GP	1
A-8990-TL	1
A-8991-TL	1
A-8891-L	1
A-8992-TL	1
A-8985-G	1
A-8986-L	1
A-8989-GL	1
A-8989-TL	1
A-8993-TL	1
A-8992-GY	1
A-8994-GN	1
A-8991-G	1
A-8985-T	1
A-8990-T	1
A-8894-T	1
A-8618-T	1
A-8986-T	1
A-8988-T	1
A-8987-T	1