

MAKOWER CHALLENGE 2012

To be judged at
**MALVERN AUTUMN
QUILT FESTIVAL 2012**

Sponsored by **makower uk**

The Henley Studio

2012 THEME: 'FLORAL PARADE'

FABULOUS PRIZES TO BE WON!

1st Prize: 20 half metres of Makower fabrics and a bundle of patchwork & quilting books

2nd Prize: 15 half metres of Makower fabrics and a bundle of patchwork & quilting books

3rd Prize: 10 half metres of Makower fabrics

2 Runner Up Prizes: 5 half metres of Makower fabrics

All prizes will include rosettes

RULES OF ENTRY

1. Entries are to be judged on the most inspirational and innovative use of the Makower Challenge fabrics 2012 which are listed below. See overleaf for fabric images.
Fabric Name: 'WINDSOR'. Fabric Codes: 844-B9, 844-Q, 845-B9, 846-B, 847-G and 849/1.
2. You must use either fabric 'Windsor Large Floral: 844-B9' or 'Windsor Large Floral: 844-Q', plus at least three of the other four fabrics stated above (845-B9, 846-B, 847-G and 849/1). The challenge fabrics must represent at least 75% of the quilt top and must clearly be part of the design. Other fabrics in the range are available if you wish to use them (but do not form part of the 75%). You can add other non-challenge fabrics if you wish.
3. Your design should be based on the theme '**Floral Parade**'.
4. Your finished quilt **must** measure between 24" square and 50" square.
5. Closing date for entry forms is **15th AUGUST 2012**.
6. Entries will be judged at the **Autumn Quilt Festival, Malvern 2012**. You will be sent an official quilt label with your entry number by mail, no later than 30th September 2012, with details of how to send in or deliver your quilt. On receipt of your quilt we will post you an "Official Quilt Receipt" to state that your entry has arrived safely with us. All entries will travel during the Spring 2013 shows at which a selection of entries will be displayed at each. Your entry will be returned during the week commencing 9th April 2013.
7. Each entry **must** have a 4" hanging sleeve.
8. The Judges' decisions are final and no correspondence can be entered into. Prizes are not transferable and no cash alternatives can be offered. No responsibility is accepted for entry forms lost, damaged or delayed in the post.
9. An entry fee of £12.00 is payable on completion of this form. This will include the return of your entry by recorded post to all U.K. mainland addresses. For overseas entries please contact us for further information.

FABRIC AVAILABILITY

The challenge fabrics will be available from early October 2011. For details of stockists, please contact Makower UK on 01491 579727. The challenge fabrics are shown overleaf. If you do not have a colour copy, you can download a colour entry form from www.grosvenorshows.co.uk or view the fabrics online at www.makoweruk.com

HOW TO ENTER

Simply fill in the form overleaf and post to Grosvenor Shows Ltd. by 15th AUGUST 2012. Please attach a cheque made payable to GROSVENOR SHOWS LTD for £12.00 to cover your entry fee. You will then receive correspondence from us by 30th September 2012 explaining how to deliver or post your entry. If you have any queries you can contact us on 01406 372600 / 372601 or e-mail: grosvenorshows@btconnect.com

MAKOWER CHALLENGE 2012

ENTRY FORM

Sponsored by
makower uk
The Henley Studio

PLEASE COMPLETE IN BLOCK CAPITALS:

Name:

Address:

..... Postcode:

Contact Telephone Number: E-mail:

Quilt Title:

Quilt Size: inches (width) x inches (height)

Artist Statement / Quilt Description:- (Max. 75 words). *If you require more space please attach a separate sheet.*

.....
.....
.....
.....
.....

- My quilt will be delivered by hand to Three Counties Showground, Malvern (Wednesday 24th October)
- My quilt will be delivered by hand to Grosvenor Shows at Spalding (by appointment)
- My quilt will be sent by post to Spalding by 17th October 2012

I understand that quilts entered into the Makower Challenge 2012 will be displayed at the Autumn Quilt Festival, Malvern 2012 (26th - 28th October 2012), and will then travel to the Spring Quilt Festivals 2013, at which a selection of quilts will be displayed at each. After this they will be returned by recorded post during the week commencing 9th April 2013.

I agree for my photograph or any others taken by the Organiser to be used in any promotional material. I hereby attach a cheque for £12.00, made payable to GROSVENOR SHOWS LTD., in respect of the quilt entry fee and return postage as detailed overleaf.

Signed: Date:

Challenge Fabrics

Please find below images of the challenge fabrics from Makower's 'Windsor' collection.

To view colour images, download this form online at www.grosvenorshows.co.uk or view at www.makoweruk.com

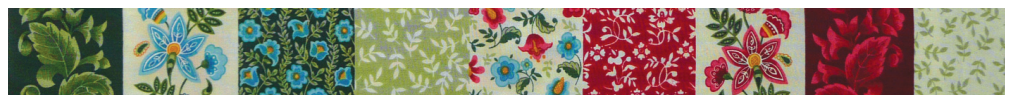


Windsor Large Floral 844-B9

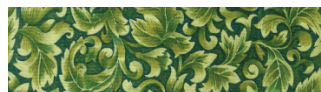


Windsor Large Floral 844-Q

You must use at least one of the above challenge fabrics (Windsor Large Floral)



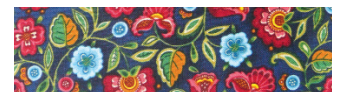
Windsor Strip Stripe 849/1 (section shown - full size: 112cm wide)



Windsor Acanthus 847-G



Windsor Small Flower 846-B



Windsor Chintz 845-B9

You must use at least three of the above challenge fabrics

RETURN THIS FORM TO: Grosvenor Shows Ltd, 282 High Road, Whaplode, Spalding, Lincs PE12 6TG
DEADLINE FOR ENTRY FORMS: 15th AUGUST 2012

Tel: 01406 372600 / 372601 Fax: 01406 372602

WEBSITE: www.grosvenorshows.co.uk

E-mail: grosvenorshows@btconnect.com

RETAILERS STOCKING THE GROSVENOR WINDSOR CHALLENGE FABRICS

RETAILER	ADDRESS	COUNTY	PHONE	EMAIL	WEBSITE ADDRESS
TUDOR ROSE PATCHWORK	AT THE GARAGE, STATION ROAD, OAKLEY, BEDFORD MK43 7RB	BEDFORDSHIRE	01234 824983	info@tudorrosepatchwork.co.uk	www.tudorrosepatchwork.co.uk
THE NIMBLE THIMBLE	9 BRIDGE STREET, BUCKINGHAM MK18 1EL	BUCKINGHAMSHIRE	07919 626953	jane@nimble-thimble.co.uk	www.nimble-thimble.co.uk
THREADS & PATCHES	15, WATLING STREET (HIGH ST), BLETCHLEY, MILTON KEYNES MK2 2BU	BUCKINGHAMSHIRE	01908 649687	threadsandpatches@gmail.com	www.threadsandpatches.co.uk
BEE CRAFTY	SUITE 5,THE GRANARY, BROOK FARM, THRAPSTON RD,ELLINGTON PE28 ODA	CAMBRIDGESHIRE	01480 891746	info@beeingcrafty.co.uk	www.beeingcrafty.co.uk
RAINBOW CRAFTS	27 GREEN STREET, WILLINGHAM CB24 5JA	CAMBRIDGESHIRE	01954 260959	sales@rainbowcrafts.eu	www.rainbowcrafts.eu
CHESHIRE NEEDLECRAFT	GOOSTREY COUNTRY & LEISURE, CRANGE RETAIL PARK, GOOSTREY LANE, CRANGE CW4 8HE	CHESHIRE	01477 534422	bernadette@cheshireneedlecraft.com	www.cheshireneedlecraft.com
SEW SIMPLE	5 REGENCY COURT, LADY HEYES CRAFT CENTRE,KINGSLEY RD, FRODSHAM WA6 6SU	CHESHIRE	01928 735732	ellavaughan02@aol.com	
LEVEN CRAFTS	7-8 CHALONER MEWS, CHALONER ST, GUISBOROUGH TS14 6SA	CLEVELAND	01287 610207	info@levencrafts.co.uk	www.levencrafts.co.uk
THE QUILTED SHEEP	THE OLD BAKE HOUSE LTD, MAIN STREET,MILNTHORPE LA7 7PN	CUMBRIA	07879 404267	julesquilts@gmail.com	
POPPY PATCHWORK	71 WESTBURY HILL, BRISTOL BS9 3AD	GLOCESTERSHIRE	07900 927279	jayne_trueman@hotmail.com	www.poppypatchwork.co.uk
CRISS X STITCHES	RED LION STREET, TYWYN, GWYNEDD LL36 9DN	GWYNEDD	01654 711466	keithlathwell@hotmail.com	www.crisxstitches.co.uk
C & H FABRICS	8, HIGH STREET WINCHESTER SO23 9JX	HAMPSHIRE	01962 843355	winchester@candhfabrics.co.uk	www.candh.co.uk
NEW THREADS	INNISFREE, STOKE ROAD, SMANNELL, ANDOVER SP11 6JL	HAMPSHIRE	07818 411788	new.threads@jlis.co.uk	www.new-threads.com
QUILTERS DREAM	THE COMMERCIAL CENTRE,UNIT 405 &407, PICKET PIECE, ANDOVER SP11 6RU	HAMPSHIRE	01264 324420	info@quiltersdream.co.uk	www.quiltersdream.co.uk
SEW A GOOD YARN	UNIT 101, EDGAR PLACE, CHEQUERS CENTRE, MAIDSTONE ME15 6AP	KENT	01622 688638	sales@sewagoodyarn.co.uk	www.sewagoodyarn.co.uk
PUDDLEDUCKS	116 ST. JOHNS HILL, SEVENOAKS TN13 3PD	KENT	01732 743642	info@puddleducksquilts.co.uk	www.puddleducksquilts.co.uk
QUILTERS QUARTERS	32 DERBY ROAD, LONGRIDGE, PRESTON 3NP	LANCASHIRE	01772 780998	emma.galbraith@live.co.uk	www.quiltersquarters.co.uk
STUART PORTER ANTIQUES LTD	15, BROAD STREET, STAMFORD PE9 1PG	LINCOLNSHIRE	07918 638661	stitcheduplyns@gmail.com	www.stuartporterantiques.com

FENWICKS	36 MARKET STREET LEICESTER LE1 6DE	LEICESTER	0116 2553322 CRAFT	leicester.enquiries@fenwick.co.uk	www.fenwick.co.uk
VOIRREY CRAFT CENTRE	BRIMSTAGE HALL, WIRRAL CH63 6JA	MERSEYSIDE	0151 342 3514	mail@voirrey.com	www.voirrey.com
SEW CREATIVE	WROXHAM BARNES, TUNSTEAD ROAD, HOVETON NR12 8QU	NORFOLK	01603 781665	sales@sewcreativequilts.co.uk	www.sewcreativequilts.co.uk
THE CRAFT AND QUILT SHOP	HEART OF THE SHIRES, NORTH OF WEEDON NN7 4LB	NORTHAMPTONSHIRE	01327 349276	annedowton@aol.com	
COTTON TREE	DENE WORKSHOPS, MICKLEY, STOCKSFIELD NE43 7BG	NORTHUMBERLAND	01661 844336	Jan-Earl@hotmail.co.uk	
MANDOR TEXTILE CENTRE	131 EAST CLAREMONT STREET, EDINBURGH EH7 4JA	SCOTLAND	0131 558 3888	fabric@mandors.co.uk	www.mandors.co.uk
MANDOR TEXTILE CENTRE	134 RENFREW STREET GLASGOW G3 6ST	SCOTLAND	0141 332 7716	fabric@mandors.co.uk	www.mandors.co.uk
PURELY PATCHWORK	23 HIGH STREET, LINLITHGOW EH49 7AB	SCOTLAND	01506 846200	esther@purelypatchwork.co.uk	www.purelypatchwork.co.uk
R M HOBBIES	33 HIGH STREET, DUNBAR, EH42 1EW	EAST LOTHIAN SCOTLAND	01368 864000		
MARY'S PATCH LTD	VEITCHS GARDEN CENTRE, EAST CALDER, WEST LOTHIAN EH53 0ET	SCOTLAND	01506 882440	sara@maryspatch.co.uk	www.maryspatch.co.uk
POLLYANNA PATCHWORK	12 HIGH STREET, ECCLESHALL ST21 6BZ	STAFFORDSHIRE	01785 859360	alison@pollyanna-patchwork.co.uk	www.pollyanna-patchwork.co.uk
SEW MANY THINGS	STONE CROSS, PENKRIDGE ST19 5AS	STAFFORDSHIRE	07940 537533	sewmanythings@mail.com	
THE PLACE	22 DAM STREET, LICHFIELD WS13 6AA	STAFFORDSHIRE	01543 253115	contact_the_place@hotmail.com	www.the-place-lichfield.co.uk
SEW AND SO'S	16 UPPER OLLAND STREET, BUNGAY NR35 1BG	SUFFOLK	01986 896147	general@sewsos.co.uk	www.sewsos.co.uk
SEW CREATIVE	23 HATTER STREET, BURY ST EDMUNDS IP33 1NE	SUFFOLK	01284 755459	enquires@angliataxhelp.biz	www.sewcreative.co.uk
C & H FABRICS	6a, TUNSGATE SQUARE GUILDFORD GU1 3QZ	SURREY	01483 301380	guildford@candhfabrics.co.uk	www.candh.co.uk
ELPHICKS LTD	10-13 WEST STREET, FARNHAM GU9 7DN	SURREY	01252 716222	shop@elphicks.co.uk	www.elphick.co.uk
CHALK HILL BLUE	35 ADVERSANE ROAD WORTHING BN14 7QJ	SUSSEX	01903 532698	sue_hards@hotmail.com	
C & H FABRICS	33/34 NORTH ST, CHICHESTER P019 1LX	SUSSEX (WEST)	01243 783300	chichester@candhfabrics.co.uk	www.candh.co.uk

MATERIAL GIRLS	MARKET PLACE, ALCESTER, 5AE	B49	WARWICKSHIRE	01789 400747	info@materialgirlsshop.co.uk	www.materialgirlsshop.co.uk
THE COTTON PATCH	1285 STRATFORD ROAD, HALL GREEN, BIRMINGHAM B28 9AJ		WEST MIDLANDS	0121 702 2840	mailorder@cottonpatch.co.uk	www.cottonpatch.co.uk
STITCH & SEW	151 BRIDGENORTH RD, WOOLASTON, STOURBRIDGE DY8 3NU		WEST MIDLANDS	01384 372205	beckyburrage@yahoo.com	www.stepalong.co.uk
CREATIV-E-T	1 CYGNET CLOSE, ROUNDWAY, DEVIZES SN10 2UD		WILTSHIRE	01380 729811	creativ-e-t@hotmail.co.uk	
BEACHCOMBER	35 BELLEVUE STREET, FILEY NORTH YORKSHIRE YO14 9HU		YORKSHIRE	01723 514434	<u>NONE</u>	<u>NONE</u>
DIRECT KNITTING & SEWING	JACQUARD HOUSE, 769-771, ATTERCLIFFE ROAD, SHEFFIELD S9 3RE		YORKSHIRE	0114 244 9888	pauline.crawley@yahoo.com	www.directknitandsew.co.uk
06/01/2012						